



QUICK-SEARCH
YG-1 PRODUCTS!!
www.yg1.solutions

YA-AOS25

ASIA



AOSTM TAP

FSH-Coated, HSS-E Taps

for smooth surface, suitable for machining steel, ductile iron, stainless steel, and cast aluminum materials

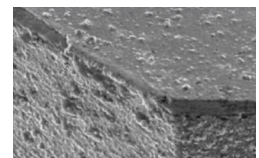


Working Material

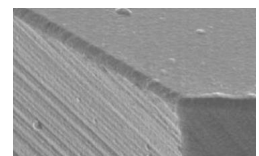
For Steels, Stainless steels, Ductile iron and Cast aluminum materials

FSH-Coating

Combining the advantages of all current coating technologies, it features high hardness, high toughness, and an extremely smooth surface. These characteristics provide highly reliable performance in threading processes.



Conventional Coating



FSH-Coating

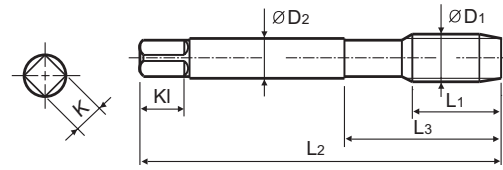


www.yg1.solutions

Spiral Flute Tap

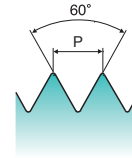
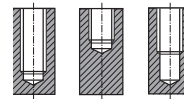
Machine taps

T2D60



Hole type

2.5×D



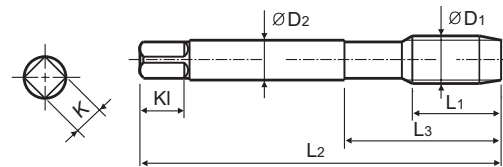
Unit : mm

| EDP No. | SIZE | Pitch | Limit | Thread Length | Overall Length | Neck Length | Shank Diameter | Square Size | Square Length | No. of Flute |
|-------------|-------|-------|-------|---------------|----------------|-------------|----------------|-------------|---------------|--------------|
| FSH-Coating | ØD1 | P | | L1 | L2 | L3 | ØD2 | K | KI | Z |
| T2D60202U | M3 x | 0.5 | YH2 | 11.0 | 46.0 | 18.0 | 4.0 | 3.2 | 6.0 | 3 |
| T2D60242U | M4 x | 0.7 | YH2 | 13.0 | 52.0 | 20.0 | 5.0 | 4.0 | 7.0 | 3 |
| T2D60282U | M5 x | 0.8 | YH2 | 16.0 | 60.0 | 25.0 | 5.5 | 4.5 | 7.0 | 3 |
| T2D60312U | M6 x | 1.0 | YH2 | 19.0 | 62.0 | 28.0 | 6.0 | 4.5 | 7.0 | 3 |
| T2D60362U | M8 x | 1.25 | YH2 | 22.0 | 70.0 | 35.0 | 6.2 | 5.0 | 8.0 | 3 |
| T2D60422U | M10 x | 1.5 | YH2 | 24.0 | 75.0 | 39.0 | 7.0 | 5.5 | 8.0 | 3 |
| T2D60502U | M12 x | 1.75 | YH2 | 29.0 | 82.0 | 42.0 | 8.5 | 6.5 | 9.0 | 3 |

Spiral Point Tap

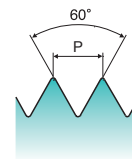
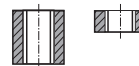
Machine taps

T2G60



Hole type

3.0×D



Unit : mm

| EDP No. | SIZE | Pitch | Limit | Thread Length | Overall Length | Neck Length | Shank Diameter | Square Size | Square Length | No. of Flute |
|-------------|-------|-------|-------|---------------|----------------|-------------|----------------|-------------|---------------|--------------|
| FSH-Coating | ØD1 | P | | L1 | L2 | L3 | ØD2 | K | KI | Z |
| T2G60202U | M3 x | 0.5 | YH2 | 11.0 | 46.0 | 18.0 | 4.0 | 3.2 | 6.0 | 3 |
| T2G60242U | M4 x | 0.7 | YH2 | 13.0 | 52.0 | 20.0 | 5.0 | 4.0 | 7.0 | 3 |
| T2G60282U | M5 x | 0.8 | YH2 | 16.0 | 60.0 | 25.0 | 5.5 | 4.5 | 7.0 | 3 |
| T2G60312U | M6 x | 1.0 | YH2 | 19.0 | 62.0 | 28.0 | 6.0 | 4.5 | 7.0 | 3 |
| T2G60363U | M8 x | 1.25 | YH3 | 22.0 | 70.0 | 35.0 | 6.2 | 5.0 | 8.0 | 3 |
| T2G60423U | M10 x | 1.5 | YH3 | 24.0 | 75.0 | 39.0 | 7.0 | 5.5 | 8.0 | 3 |
| T2G60504U | M12 x | 1.75 | YH4 | 29.0 | 82.0 | 42.0 | 8.5 | 6.5 | 9.0 | 3 |

