



QUICK-SEARCH
YG-1 PRODUCTS!!
www.yg1.solutions

YE-AOS25
EUROPE

AOSTM TAP

FSH-Coated, HSS-E Taps

for smooth surface, suitable for machining steel, ductile iron, stainless steel, and cast aluminum materials



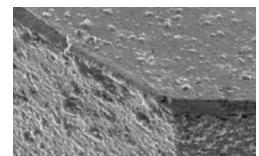
Available Only in Tap Set

Working Material

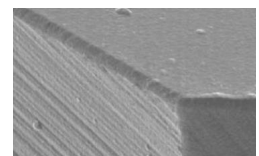
For Steels, Stainless steels, Ductile iron and Cast aluminum materials

FSH-Coating

Combining the advantages of all current coating technologies, it features high hardness, high toughness, and an extremely smooth surface. These characteristics provide highly reliable performance in threading processes.



Conventional Coating



FSH-Coating

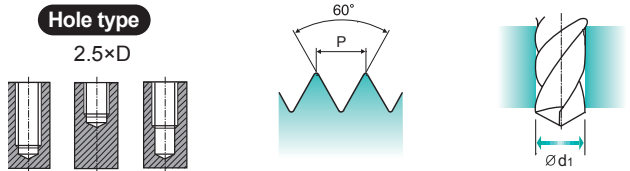
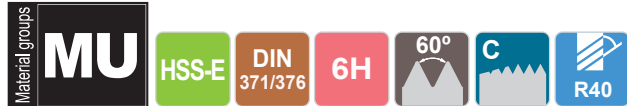
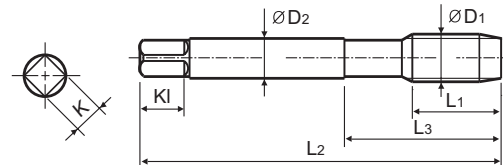


www.yg1.solutions

Spiral Flute Tap Set

Machine taps

TCE60USET7



Unit : mm

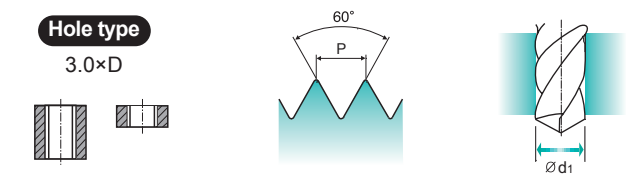
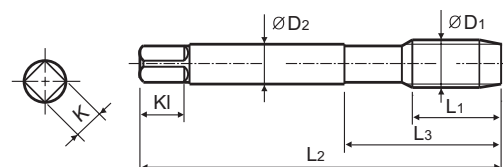
| EDP No. | SIZE | Pitch | Limit | Thread Length | Overall Length | Neck Length | Shank Diameter | Square Size | Square Length | No. of Flute | Tapping Drill Diameter |
|-------------------|------|--------|-------|---------------|----------------|-------------|----------------|-------------|---------------|--------------|------------------------|
| FSH-Coating | ØD1 | P | | L1 | L2 | L3 | ØD2 | K | KI | Z | Ød1 |
| TCE60USET7 | M3 | x 0.5 | 6H | 6.0 | 56.0 | 18.0 | 3.5 | 2.7 | 6.0 | 3 | 2.5 |
| | M4 | x 0.7 | 6H | 7.0 | 63.0 | 21.0 | 4.5 | 3.4 | 6.0 | 3 | 3.3 |
| | M5 | x 0.8 | 6H | 8.0 | 70.0 | 25.0 | 6.0 | 4.9 | 8.0 | 3 | 4.2 |
| | M6 | x 1.0 | 6H | 10.0 | 80.0 | 30.0 | 6.0 | 4.9 | 8.0 | 3 | 5.0 |
| | M8 | x 1.25 | 6H | 13.0 | 90.0 | 35.0 | 8.0 | 6.2 | 9.0 | 3 | 6.8 |
| | M10 | x 1.5 | 6H | 15.0 | 100.0 | 39.0 | 10.0 | 8.0 | 11.0 | 3 | 8.5 |
| | M12 | x 1.75 | 6H | 18.0 | 110.0 | 44.0 | 9.0 | 7.0 | 10.0 | 3 | 10.2 |

►DIN 371(M3~M10) and DIN 376(M12)

Spiral Point Tap Set

Machine taps

TCJ60USET7



Unit : mm

| EDP No. | SIZE | Pitch | Limit | Thread Length | Overall Length | Neck Length | Shank Diameter | Square Size | Square Length | No. of Flute | Tapping Drill Diameter |
|-------------------|------|--------|-------|---------------|----------------|-------------|----------------|-------------|---------------|--------------|------------------------|
| FSH-Coating | ØD1 | P | | L1 | L2 | L3 | ØD2 | K | KI | Z | Ød1 |
| TCJ60USET7 | M3 | x 0.5 | 6H | 11.0 | 56.0 | 18.0 | 3.5 | 2.7 | 6.0 | 3 | 2.5 |
| | M4 | x 0.7 | 6H | 13.0 | 63.0 | 21.0 | 4.5 | 3.4 | 6.0 | 3 | 3.3 |
| | M5 | x 0.8 | 6H | 15.0 | 70.0 | 25.0 | 6.0 | 4.9 | 8.0 | 3 | 4.2 |
| | M6 | x 1.0 | 6H | 17.0 | 80.0 | 30.0 | 6.0 | 4.9 | 8.0 | 3 | 5.0 |
| | M8 | x 1.25 | 6H | 20.0 | 90.0 | 35.0 | 8.0 | 6.2 | 9.0 | 3 | 6.8 |
| | M10 | x 1.5 | 6H | 22.0 | 100.0 | 39.0 | 10.0 | 8.0 | 11.0 | 3 | 8.5 |
| | M12 | x 1.75 | 6H | 24.0 | 110.0 | 44.0 | 9.0 | 7.0 | 10.0 | 3 | 10.2 |

►DIN 371(M3~M10) and DIN 376(M12)

